

Fang Si-Qi's First Love Paradise from the Perspective of Feminist Criticism

Xite Yang

School of Foreign Languages, Southwest Petroleum University, Chengdu 610500, China

Abstract: *Fang Si-Qi's First Love Paradise has stirred a strong reaction in the society as soon as it was published. It is because the book not only tells a touching story, but also profoundly reveals the unfair condition that women have suffered for a long time under the traditional and conservative social structure. Under the traditional social structure, women have long been overlooked by the patriarchy and this has perpetuated the subordination of women to men. As a result, women are lack of their social subjectivity and are regarded as the "Other". In such an environment, there is a huge inequality between men and women, and men always demand and oppress women. With the feminist movement emerging and developing, women start to pursue equal rights with men in an organized way. Feminist criticism is a powerful tool to achieve their goals. To analyze Fang Si-Qi's First Love Paradise from the perspective of feminist criticism is quite reasonable and can help explore the social factors behind the story.*

Keywords: Female; Feminist criticism; Fang Si-Qi's First Love Paradise; Patriarchy.

1. INTRODUCTION

Women have long been in a suppressed position in society, and the situation in China is no exception. For thousands of years, China's feudal system has suppressed women in almost all aspects, leading to their long and unfair treatment. Since modern times, significant changes have been achieved in China through reforms aiming to change the existing habits and customs; however, due to various reasons, the equality of men and women in social status has not been achieved yet. Fang Si-Qi's First Love Paradise (hereinafter referred to as Fang Si-Qi) deeply reflects the passive, subordinate state of women in China's society. Fang Si-Qi tells an immoral and odious story from the perspective of a little girl, revealing the cruel fact that women are being harmed by men and society. As the feminist movement progresses, activists are committed to freeing women from the appalling situation. As a very powerful "weapon", feminist criticism is compatible in nature to the analysis of Fang Si-Qi. As an intermediary department of credit business, banks need to evaluate the strength, supply-demand relationship and credit standing of enterprises, in order to estimate the credit risk of micro, medium and small enterprises and formulate credit strategies. In this paper, five risk indicators are extracted from two aspects of enterprise's comprehensive strength and reputation to establish a risk assessment system. Among them, the total input price and tax, total output price and tax, and profit rate are the assessment standards of enterprise's comprehensive strength, and the failure rate of input and sales transaction is the assessment standard of enterprise's reputation. Next, the selected risk indicators are standardized with z-score elimination dimension, and the standardized index data are evaluated with Logistic regression analysis model, to obtain the probability of corporate default risk. In order to give the optimal credit policy, we from the perspective of the bank, application of least square method, the fitting of the annual interest rate and turnover rate equation of the premise, established the model of credit strategy based on bank profits maximum, determine the constraint condition, and apply genetic algorithm for each enterprise loan amount and the bank loan interest rate.

2. OVERVIEW OF FEMINIST CRITICISM

Feminist criticism, originated from feminism, is a literary criticism method that emerged at the end of 1960s. It focuses on female group, attempting to explore female values and seek equality between men and women from literary and other perspectives. Feminist criticism is an important theoretical part of feminism and an indispensable practical method to change women's current status.

Because the factors that affect the credit risk of enterprises are various and multi-level, for the selection of risk evaluation indexes, we use accounting related theory, from the perspective of the combination of quantitative and qualitative, eventually selected related evaluation index, and whether the default as dependent variable, using Logistic regression analysis of short-term forecast more accurate, for each enterprise credit risk considerations, and the results are nonparametric test to validate the feasibility of the model analysis, finally combining the credit risk and loan interest rates and credit strategy customer churn rate relations. Based on the data and parameters of a

certain system given in question C of the national College Students mathematical Modeling Contest in 2020, as well as the transmission node diagram, this paper attempts to solve the following problems:

Through the quantitative analysis of the risk indicators of 123 enterprises in Annex 1, the credit risks of various small, medium, and micro enterprises are evaluated, and the credit strategies of the bank for different enterprises under the condition that the total annual credit amount is fixed are given [1-4].



Figure 1: Maslow's psychological needs

Note: Topics can be downloaded from the official website of the National Mathematical Contest in Modeling for College Students: <http://www.mcm.edu.cn>

2.1 Feminism

Feminism is no longer a strange word to people. It has long been introduced and has undergone a long period of development. The women's movement was a renewal of an old tradition of thought and action already possessing its classic books which had diagnosed the problem of women's inequality in society, and (in some cases) proposed solutions [1]. Feminism aims at exploring the nature of gender inequality in society and strives for the equality of men and women in politics, economy, and education and so on. It also involves women's reproductive rights and abortion rights.

Generally speaking, there are three stages in the development of feminism. The first one lasted from the Enlightenment in the 18th century to around 1960, which is the emerging stage of the women's movement and mainly strives for social equality for women as well as fights against aristocracy's thoughts of belittling women. The second one started from the 1960s and lasted to the 1970s. With the pursuit of equal political rights for gender at its core, this stage witnessed the emergence of many theoretical studies and schools related to feminism. The third one is after the 1970s. During this stage, the feminist movement mainly focuses on women's self-esteem, self-confidence, self-love, and self-awareness. It has been trying to realize women's social appeals through social activities and organizations, and it has been committed to increasing society's sensitivity to gender [2].

The connotation of feminism has been enriched in its development, and various schools have emerged with their ideas constantly sparkling. There are many ideas worth learning from, but there are also extreme ideas that are supposed to be avoided. Feminist schools include ecological feminism, liberal feminism, Marxist feminism, socialist feminism, and radical feminism and so on. According to some scholars, the views of some feminists set the two sexes, male and female, against each other, which is undesirable and hinders the realization of the true equality between men and women.

Originated in the West, the impact of feminism on China is no less significant than that of the West. The introduction of feminism into China has sparked idealistic collision, making people the defenders of women's equal social status. It is commonly agreed that feminist theory was introduced to China in the 1980s.

Some scholars divide the development of feminism in China into three stages: introduction by translating, theoretical practice and research innovation. Around 1980, some scholars engaged in foreign literature research introduced Western feminist ideas to China by translating Western literature. After the 1990s, the translation and introduction of feminism could no longer meet the research needs of academia in China. Thus, scholars began to apply relevant theories to interpret the works of Chinese female writers in the new era. After more than 20 years of research and development, feminism has entered a deepening period in China. Thanks to the efforts of many scholars, feminism has realized its localization in China as lots of professional scholars try to research feminism from the specific situations in China [3].

Table 1: Two-sampled Week of December 17, 2013 to December 16, 2014 (Period 1) & June 29, 2021 to June 28, 2022 (Period 2)

INR	Patients		Control		t-test	
	Mean	\pm SD	Mean	\pm SD	T	p-value
INR0	1.02	0.06	1.02	0.05	0.451	0.654
INR1	1.04	0.06	1.01	0.02	1.020	0.114
INR2	1.02	0.04	1.00	0.01	1.044	0.101
INR3	1.02	0.04	1.01	0.02	1.783	0.079

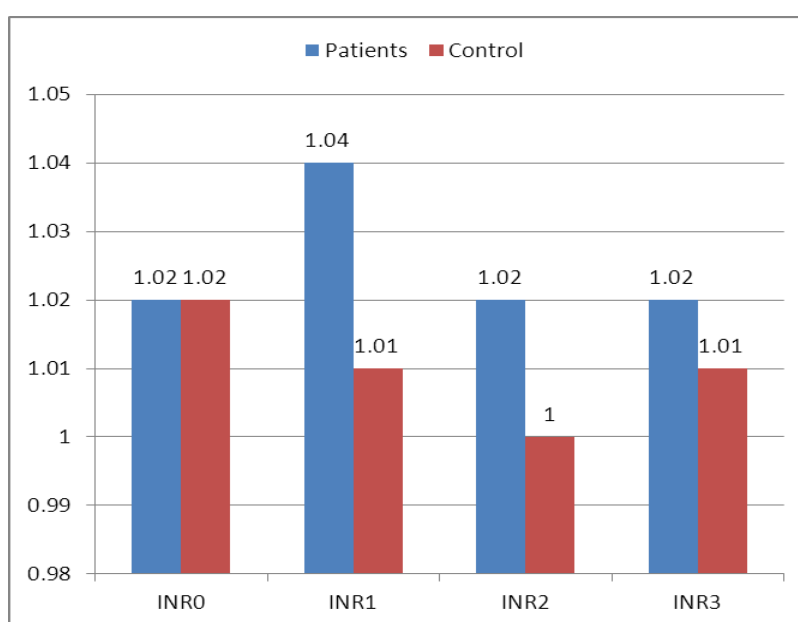


Figure 1: Comparison between patients and control as regard INR at the beginning, middle "3 and 6 months later" and at the end of the study

2.2 Feminist Criticism

Feminist criticism came into being along with the feminist movement. It is a literary criticism pattern that emerged in the West in the 1960s when the feminist movement was on the second climax and the women's liberation movement was marching forward. It can be said that feminist criticism is inseparable from the Western women's liberation movement. Feminist criticism is not merely a simple part or derivative of feminism, but an important practical means to influence people's behavior and cognition, to make a change in women's social status.

Feminist criticism is a criticism pattern centered on women and its research subjects include women's images, creations, and readings and so on [4]. The basic opinion of this theory is that Western civilization is male-centered and controlled by men while women are in a subordinate position. Although this theory was born in the West, it is also applicable to the situation in China and that of the countries around the world.

Generally speaking, the practice of feminist criticism mainly involves examining classics, exploring works written by women, re-evaluating women's experiences, examining female representatives in literature, challenging representations of women as "Other", as "lack" or as part of "nature", examining power relationships and seeking to break them and so on [1].

Statistical analysis of patients HCV PCR revealed the following: 29 patients are in low viremia (72.5%), 9 patients are in intermediate viremia (22.5%), 2 patients are in high viremia (5%).

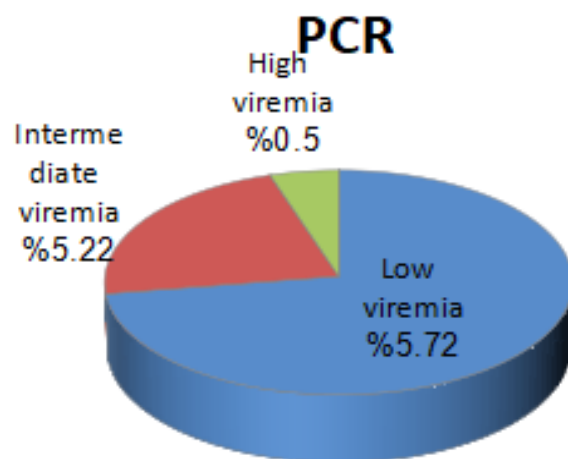


Figure 2: patients HCV PCR classification.

Similar to the development of feminism, feminist criticism has continuously absorbed various academic ideas during its development, resulting in different school systems. The two most influential schools are the Anglo-American version of feminism and the French feminism. The focus of research varies among different schools. For example, the Anglo-American school emphasizes social criticism and the cultural traditions of women themselves, attempts to establish a feminist literary model, and focuses on being realistic and participating in women's movement. The French feminist criticism pays more attention to the language and text of women's writing, and it reflects the characteristics of structuralism [4]. Cheng Xilin and Fang Yazhong [5] have pointed out that the Anglo-American school focuses more on traditional critical concepts, such as themes, motif and characters, and takes careful reading and interpretation of literary texts as the main task of feminist criticism. As for the French school, the advocacy is tinted with strong theoretical speculation, focusing on the language, representation, psychology, and philosophy in literary criticism instead of on the reflection of reality and the recurrence of women's personal experiences in literature.

3. FLOWER OF PAINS: SYNOPSIS OF FANG SI-QI

Fang Si-Qi is a novel and an autobiography written by Lin Yihan, a Chinese writer. Lin Yihan was of good family. She had been achieving good academic performance in school since her childhood. But in high school, she began to suffer from depression, and the cause might be that she was sexually assaulted by her high school tutor. She made several attempts to commit suicide but in vain. Later, her depression was getting worse. Early in 2017, she committed suicide right after her maiden work Fang Si-Qi's First Love Paradise was published. Whether Lin was enticed into unlawful sexual intercourse was not clear because of the lack of sufficient and valid evidence, thus the matter was leaving unsettled. The suspect, Chen Guoxing, is not subject to legal arbitration but he is morally condemned by many people.

Fang Si-Qi is about women's resistance in this patriarchal society. The book consists of three chapters: Paradise, Paradise Lost, and Paradise Regained. It tells the story of a little girl named Fang Si-Qi who was seduced and raped by her high school tutor and ended up suffering from mental illness.

Fang Si-Qi spent a very happy childhood with her close friend Liu Yiting. However, the happiness was gone when she began her study in middle school. Li Guohua, the newly arrived neighbor next door, planned to rape her after seeing that she was attractive. First, he investigated Fang Si-Qi's family in the name of a good neighbor. In order to

get close to Fang Si- Qi, he then offered to be her tutor. After that, he had the chance to be with her in private and so he raped her. For a long time, he maintained an unfair and distorted relationship with Fang Si- Qi.

Fang Si-Qi had thought that it was a toxic relationship and wished to press charges against Li Guohua. But she was too panic to handle such thing as this evil man was her tutor. So, she turned to her mother in a timid and indirect way: "Our family seems to have everything except sex education." Her mother responded: "Sex education is for those who need sex." This cold answer made Fang Si-Qi understand that she couldn't talk about this matter with her parents. But she tried to hint to her mother again: "I heard some student at school is in a relationship with her teacher." "What a slut at such a young age." was all her mother said. She was surprised that her mother's reaction was to condemn the student instead of the teacher. She was desperate; her two attempts to talk to her mother ended up as being hurt twice, so she gave up the thought of asking for help.

In the following days, Fang Si-Qi faced insults and sexual assaults from Li Guohua on her own. She was tortured physically and mentally, suffered from depression, and was eventually sent to a mental hospital. During her stay in the hospital, her friends Liu Yiting and Xu Yiwen often came to visit.

Lin Yihan infused all her longings in the character Xu Yiwen who was a girl from a better off family, married to Qian Yiwei, a boy from a rich family. However, their married life was filled with domestic violence, and Xu Yiwen was the victim. Her parents-in-law also treated her poorly. One time, Xu Yiwen almost died because Qian Yiwei was drunk and beat her again, which caused her to miscarry. It was not until that moment that Xu Yiwen could keep her head clear. Later she chose to get a divorce and left Qian's family once and for all. In the end, she met her true love Maomao.

4. THE TRAGEDY OF BEING THE "OTHER"

In a patriarchal society, women are thought to be incomplete and have long been subjected to scrutiny and oppression from men. Men put women at an inferior position and believe that women are subordinate to men for they think men are born to dominate women. As a result, a complete system in patriarchal society has formed to "imprison" and "tame" women, making them the way men like. Thus, women have lost themselves. In such a social environment, women have never been truly recognized and never gained an equal position. Instead, they are just the "Other" who are not accepted in the society. After being the "Other" for a long time, plenty of women are "domesticated" and thus accept the patriarchal system.

As "marginal individuals", women have lost their "subjectivity" and are forced into the social order that conforms to the principles of men in the patriarchal society; women are simply an object and tool for men to prove their power, and an empty signifier of gender slavery in society [6]. Fang Si-Qi depicts such social relationship vividly.

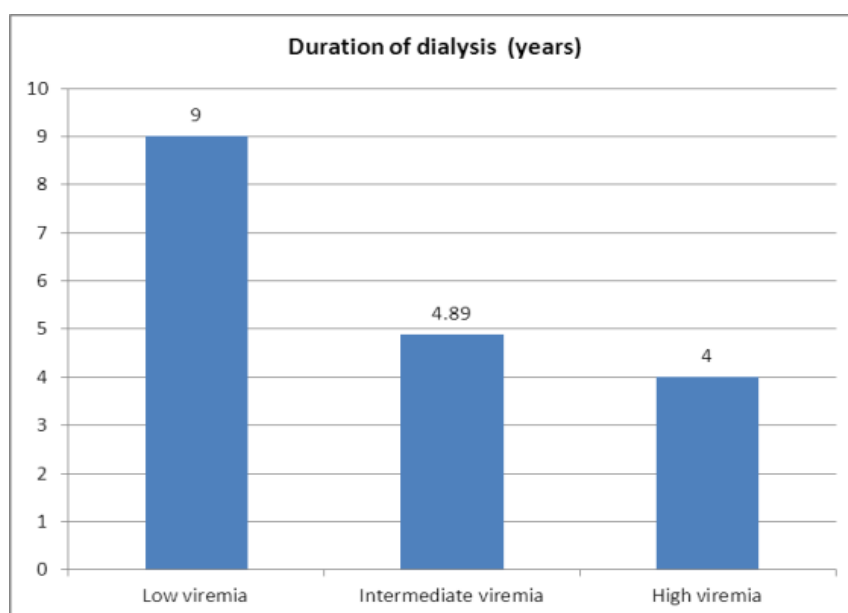
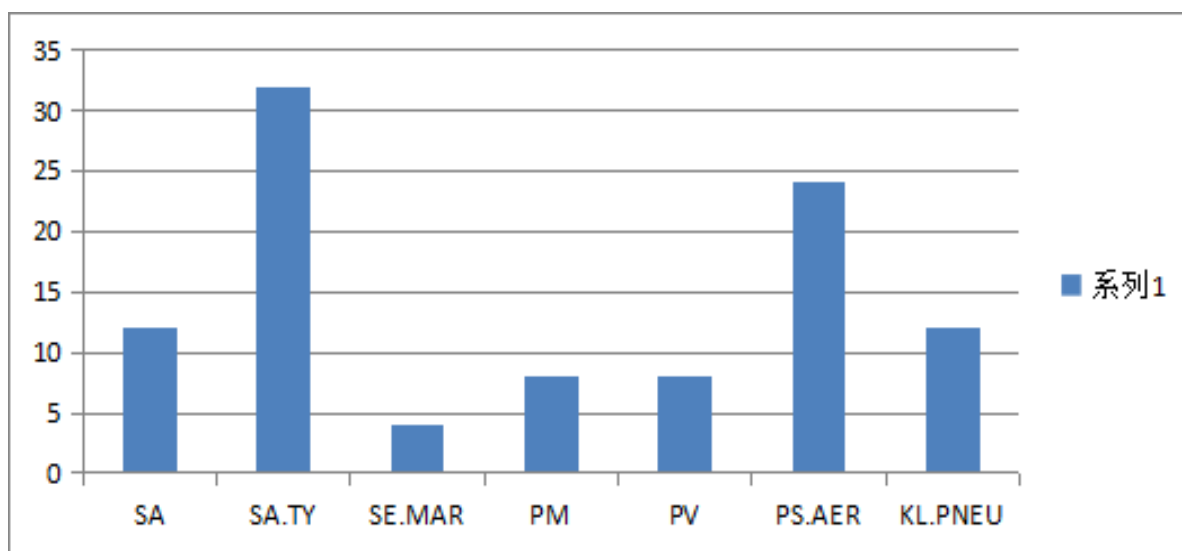
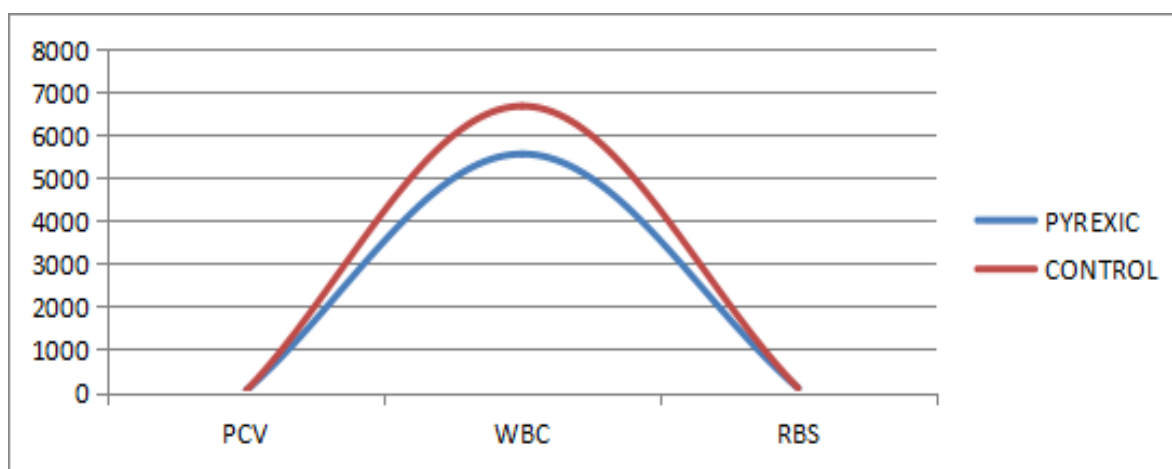


Figure 3: Comparison between low, intermediate and high viremia as regard duration of dialysis (years).

Table 2: Comparison between low, intermediate and high viremia as regard duration of dialysis (years).

PCR	Duration of dialysis (years)		ANOVA	
	Mean	\pm SD	F	p-value
Low viremia	9.00	3.32	8.26	<0.001
Intermediate viremia	4.89	1.54		
High viremia	4.00	1.41		

**Figure 4:** Prevalence of Bacteria in the examined pyrexia subjects**Figure 5:** Relative measurement of hematological and biochemical parameters of pyrexia and control groups

4.1 Prison: "Fang Si-Qi" in Patriarchal Society

What Fang Si-Qi tells is more than the tragedy of a little girl. It exposes the physical and mental harm suffered by women and reveals how distorted the relationship between men and women is in the patriarchal society.

4.1.1 Men's condescension over women

The harm done to women by patriarchal society firstly lies in men's condescension over women with their inner contempt for female. There are many examples like this in the book.

Xu Yiwen and Qian Yiwei were thought to get married for love, but the reality was cruel. Qian Yiwei, a rich man who was born with a silver spoon in his mouth, made great efforts when pursuing Xu Yiwen. Once, he waited for Xu Yiwen in the pouring rain for a long time and it was this behavior that touched Xu's heart. However, after they got married for less than a year, one time Qian Yiwei went home drunk and beat Xu Yiwen for no reason. This

whole thing destroyed Xu Yiwen's personality. "The next evening after work, he pretended like nothing had happened and sought her consent for sexual intercourse." [7] In his eyes, Xu Yiwen was nothing but his tool for sexual desire. When they were in Japan, Qian Yiwei even had sexual intercourse with Xu Yiwen in front of their friend Jimmy; he ignored Xu Yiwen's refusal and Jimmy's presence. For him, Xu Yiwen is an object for sexual pastime without personality.

This is true for Li Guohua as well. In Li Guohua's eyes, women are naked objects for his sexual fantasy. His sexual desire can even be aroused by simply looking at Xu Yiwen's ankles. Teachers around Li Guohua were of the same kind, too. They gathered together now and then to show off the female students they had "conquered" without being ashamed at all. For them, women are born to be "conquered" and satisfy their desires.

4.1.2 The Traditional Concept of Chastity

The patriarchal society uses chastity as a means to control women. The traditional concept of chastity is a poison given to women, and being conservative to and ashamed of sex are catalysts for such poison.

It can be seen from the beginning of Fang Si-Qi that the social atmosphere presented in the book holds a conservative attitude towards sex. The book starts with a girl named Liu Yiting vomiting sea cucumbers and she said it was like having oral sex. Hearing this, her mother was very angry and punished her. This story indicates that children lack sex education. After Fang Si-Qi was raped by Li Guohua, she tried to communicate with her mother, saying that their family lacked sex education, but her mother answered that sex education is for those who need sex. Such a conservative environment towards sex made Fang Si-Qi dare not to speak out after being raped as it had something to do with her self-esteem and chastity.

When she mentioned this topic with her mother for the second time, she actually tried to indicate that the student being with the teacher in school was her and hoped that her mother would give her a hand. But her mother said, "What a slut at such a young age." She tried asking for help for twice, but they were all in vain. So, she stopped trying. From this aspect, it was literally the mother who pushed her daughter into the abyss.

Another character, Cookie, was raped by Li Guohua, too. After being raped, she went to her boyfriend for help. Her boyfriend did not sympathize with her or give a hand, nor did he report Li Guohua to police. He chose to break up with Cookie, saying "Why would I be with the dirty Cookie? You are dirty as hell." Chastity undoubtedly oppresses women in spirit. The double standards of chastity in a patriarchal society make sexual assault a symbol of men's power and glory, while it is a physical impurity and a shame on women's personality [8].

4.1.3 The Shackles of Patriarchal Society

On one hand, prosecuting men almost equals to a crime in a patriarchal society. Guo Xiaoqi, another victim girl, fell in love with Li Guohua after being sexually assaulted by him. Later, she exposed what Li Guohua had done online after Li abandoned her. However, her post was filled with people's insulting comments towards her. On the other hand, it is even more scary that some women who have been "domesticated" try to "tame" other women. Both Liu Yiting and Fang Si-Qi's mothers are like this. Another female teacher, Cai Liang, was not only domesticated, but became an executioner, colluding with male teachers and sending female students to their hands.

As the author Lin Yihan said, "The largest massacre in human history is the rape like Fang Si- Qi." The vast majority of men, "domesticated" women, and the entire patriarchal society are all executioners.

4.2 Suppression: Fang Si-Qi's First Love Paradise

Fang Si-Qi is just one of the victims of Li Guohua's sexual assault. Li Guohua dared to rape Fang Si-Qi because men, more or less, have a condescending attitude towards women in that social environment. It was not just that Fang Si-Qi was beautiful. Another reason that made him bold enough to commit rape was he found that the society's taboos on sex were too convenient for rape. After a girl was raped, the whole world would think it was her fault, and even the girl herself would have the feeling that it was her fault [8]. A girl who grew up under such traditional social system will be spiritually influenced and harmed.

As an elder and teacher, Li Guohua had a comprehensive control over Fang Si-Qi. Li Guohua's identity was very typical. He represented the male power: as a man, he possessed the privileges in a patriarchal society; as a teacher,

he had the authority over students. The relationship between Fang Si-Qi and Li Guohua was a hierarchical one of old and young, man and woman, and teacher and student. Such relationship means a disparity in their minds, status, and knowledge, which easily leads to an unequal relationship, and the weak ones are often controlled by the strong ones [8].

Fang Si-Qi loved literature and Li Guohua took advantage of her love to literature to control her mind. He skillfully wove lies about love to deceive Fang Si-Qi: "You can blame me for having gone too far, but can you blame my love? Can you blame your own beauty? What's more, Teachers' Day is just a few days away. You are the best gift of Teachers' Day in the world." As Li spoke of love, he praised Fang Si-Qi's beauty and absolved him of his evil behaviors, as if it was not his fault at all. It was all love's fault. It was Fang Si-Qi's fault because she is too beautiful. He even compared their relationship with those of some famous writers and scholars, making his seduction seem like love.

Li Guohua made Fang Si-Qi suffer from sexual assault and mental anguish. This toxic and distorted relationship between them lasted for five years. It lasted so long that Fang Si-Qi nearly believed there was true love between them. She thought to herself, "Teacher Li really loves me. He is now showing me the most vulnerable side of him." She fell into self-deception.

The only thing Li Guohua has for Fang Si-Qi is sexual desire, not love. Love is just an excuse he found to cover his desire and delude Fang Si-Qi. During the five years, Li Guohua constantly brought her to various hotels to satisfy his sexual desires, which made Fang Si-Qi's depression worse.

The last time Li Guohua brought Fang Si-Qi to a hotel he was refused by Si-Qi with the excuse that she was on her period. At night, Li Guohua got on Fang Si-Qi's bed and found out that she had lied to him, so he tied her up to satisfy his sick sexual needs and raped her again. This time, Fang Si-Qi had a final mental breakdown.

4.3 Rebellion: Xu Yiwen's Breaking Free

Xu Yiwen's life experience was a process of female consciousness awakening from the domestication of the patriarchal society. Xu Yiwen's awakening is also the awakening of Lin Yihan. It is a wish in the author's heart to break the patriarchal shackles.

In the novel, three characters are particularly important: Liu Yiting, Fang Si-Qi, and Xu Yiwen. The three of them can be regarded as three images, all of which are incarnations of Lin Yihan. Liu Yiting is the longing that Lin herself had not been tormented; Fang Si-Qi is the symbol of Lin who were already tormented; Xu Yiwen, who has been tormented but broken free, is a prospect that Lin had dreamed of.

Less than a year after marrying Qian Yiwei, Xu Yiwen was subjected to domestic violence. Qian Yiwei disrespected Xu Yiwen's personality. Despite being in deep distress, Xu Yiwen has endured Qian Yiwei's behaviors for a long time. Even if Qian Yiwei was having sexual intercourse with her in front of their friend, she failed to refuse or rebel. Xu Yiwen was nothing more than a sexual tool for Qian Yiwei.

Xu Yiwen represents the image of many housewives in patriarchal society. They have lost their spiritual world and their bodies. The traditional women's "body consciousness" and body claims are suppressed, passive, and silent. Women's "control" of their bodies appears to be an action done by themselves, but its true nature is an action done by "involuntariness" under traditional moral education [9].

Fang Si-Qi suffered a final mental breakdown after being sexually assaulted for the last time. Xu Yiwen suffered a miscarriage after being beaten by Qian Yiwei for the last time and almost died. However, Xu chose to divorce and left him.

They are all victims of the patriarchal society. Xu Yiwen is a glimmer of hope that breaks the patriarchal society, and a beautiful incarnation of Lin Yihan's dream to break her shackles. Unfortunately, Lin Yihan did not become Xu Yiwen. Instead, she became Fang Si-Qi and eventually committed suicide.

5. CONCLUSION

The oppression of women in patriarchal society has a long history, resulting in women being marginalized and not accepted by the patriarchal system for a long time. With the awakening of women's self-awareness and the rise and

development of feminist movements, various activists strive for women's equal social status with men. These are the essence that a society needs to be equal.

Feminist criticism is an important method that emerged along with the development of feminism to gain rights for women. From the perspective of feminist criticism, the analysis of Fang Si-Qi reveals the serious imbalance in gender equality in patriarchal society. Women are suffering from various kinds of oppression. Fang Si-Qi not only reflects the painful situation of women in the novel, but also the author's own sufferings in the real life. It can be said that Fang Si-Qi is a very successful feminist novel, which represents women's resistance in this unequal patriarchal society.

Pursuing a society of gender equality is necessary for shaping harmonious relationships between men and women. In the book *The Second Sex*, Simone de Beauvoir believes that only when the meaningful common "transcendence" between the sexes is found, a state of balance between subjects is achieved, the sexes are no longer filled with opposition and subordination, can each individual achieve true "freedom" and "nobility" [10].

This study evaluates the content of Global Time's coverage on Xi Jinping in the year of the two international polls in extent, news sources, frame and valence, and analyzes its strategies and problems in the process of shaping the image of national leader.

In the two periods, the number of reports of the Global Times on Xi did not differ significantly, and there was no tendency to increase attention. In addition, the number of monthly releases fluctuated greatly, so the reports may be concentrated or insufficient in some times, which affects the stable reception of audience information. In the second observation period, the Global Times also ignored the consideration of international readers' interest in reading, and launched a large number of ultra-short news which was difficult to present details. Moreover, as a newspaper which can represent the Chinese official, Global Times insisted on the authority of information and never accepted contributions from social groups and the public, so that its news sources were monotonous. The deficient news sources will not only limit the perspective, but also affect the diversity of content types. The findings indeed showed that the Global Times did not produce diversified news types, and straight news with concise elements was released in large quantities. Not only that, Global Times also showed great dependence on the news reprinting mode. The proportion of news content which independently produced by its own journalists was small, and they lacked initiative in shaping the image of leaders.

Moreover, the frames describing Xi's responsibilities and ideas totally led to the image construction of him. Although in the second period, the frame of governing belief exceeded the frame of duty performance, the two frames essentially emphasized the similar frame logic, further consolidating Xi's image of a political careerist in dealing with China and international affairs. The serious deficiency or even disappearance of the personal image frame that expressed personal stories and personality traits made it impossible to meet the audience's expectations for a comprehensive and vivid image of characters.

In the valence of the report, it was difficult for readers to see the negative emotions about Xi Jinping. The use of high-frequency adjectives in the two periods also highlighted the neutral and positive attributes, trying to avoid the negative image of him as a national leader to the audience. Chinese news media always intend to represent and disseminate a consistent official voice of the authority (Zhang et al., 2019). They tend to positively report China in comparisons with Western media (Liu et al., 2018). However, the overemphasis on the positive nature of Xi's national image and the excessive use of words with strong propaganda color may cause the revulsion of international readers and shake their trust in his image.

In conclusion, in the year of two international polls, during the two observation periods of December 17, 2013 -- December 16, 2014 and June 29, 2021 -- June 28, 2022, in the context of the intensification of conflicts between China and major Western countries, Global Times adhered to similar frame logic and valence, used monotonous news sources, and did not improve in terms of production time, distribution and article length. It has failed to take positive and effective measures to shape the image of leaders in the face of the changing international situation. This study has some limitations. First of all, it used the method of constructed week to analyze the coverage of Xi Jinping the years before the two polls, taking the samples as the representative. Although this method is reasonable, it did not cover all the articles, the accuracy of the research result is insufficient to a certain extent. Secondly, this study only analyzed the content of Global Times' reports on Xi Jinping, summarized its characteristics and problems, but did not deeply explore the reasons why the Global Times chose these strategies to construct the image of Xi. Therefore, the depth of this study needs to be improved. Moreover, it can carry out the production

frame analysis and audience frame analysis of Global Times during this period in the future.

ACKNOWLEDGMENTS

Thanks for Guan Yuling's help, this essay can finally be finished in English. The author's English is poor and Guan did a lot of help with the writing.

REFERENCES

- [1] Peter Barry: *Beginning Theory: An Introduction to Literary and Cultural Theory* (Manchester University Press, The United States of America 2009), P.116-128.
- [2] Zhou Nie. A Brief Analysis of the Development of Feminist Movement Thought [J]. *Times Finance*, 2013, (5): 151-153.
- [3] Wenjuan Ma. The Spread and Development of Western Feminism in China [J]. *Guide to Business*, 2014, (10): 195, 67.
- [4] Yanqiu Zhao: *Practical Course of Literary Criticism* (Zhongnan University Press, China 2011). P.245-246. (In Chinese)
- [5] Xilin Chen, Yazhong Fang: *What Is Feminist Criticism* (Shanghai Foreign Language Education Press, China 2011), P.2. (In Chinese)
- [6] Yuechuan Wang. Feminist Criticism in the Context of Postmodern Culture [J]. *Study & Exploration*, 1993(01):97.
- [7] Yihan Lin: *Fang Si-Qi's First Love Paradise* (Beijing United Publishing Co., Ltd., China 2018), P.81. (In Chinese)
- [8] Xianpin Ren, Yu Wang. Individual Alienation in the Patriarchal Society- Review of Yihan Lin's *Fang Si-Qi's First Love Paradise* [J]. *Contemporary Chinese Literature Studies*, 2020, (5): 180-186.
- [9] Hong Qi. The Trial of Human Nature behind the Cruel Youth- On Yihan Lin's *Fang Si-Qi's First Love Paradise* [J]. *Yangtze Jiang Literary Review*, 2019, (5): 99-103.
- [10] Mengyang Wu. A Study on *The Little Mermaid* from the perspective of Feminist Criticism [J]. *Modern Music*, 2021, (7): 191-193.